

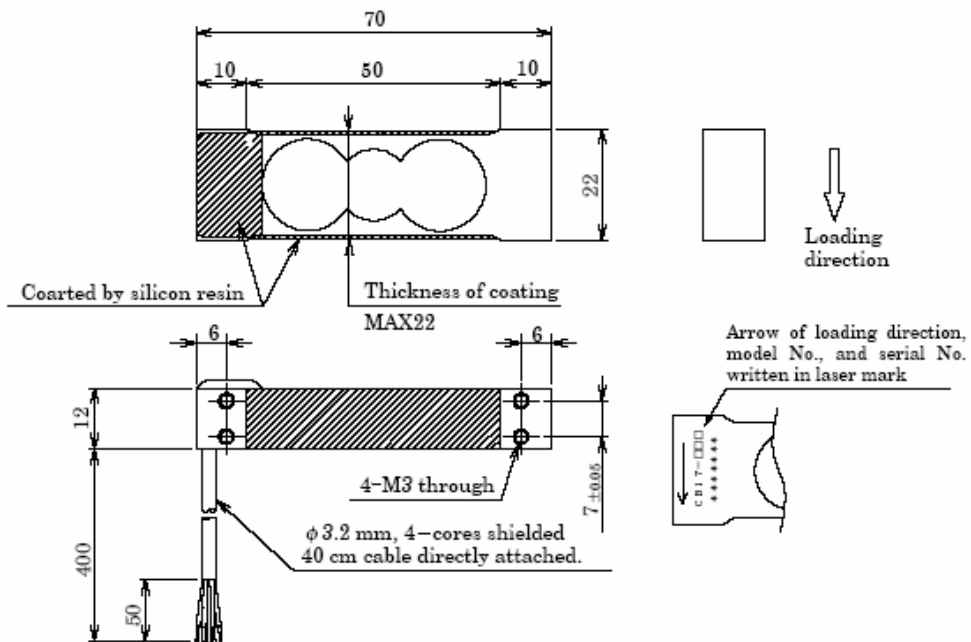
**İMAJ TEKNİK**  
ELEKTRİK ELEKTRONİK MALZ. SAN. VE TİC. LTD. ŞTİ.

# NMB

## SPECIFICATIONS

Load Cell  
CB17-600G~3K-11

SPEC.No.EN214021-B 2/2



(Unit : mm)

### Outline dimensions

P/No.	Rated capacity	Rated displacement	Natural frequency (Hz)	Weight (Approx.g)
CB17-600G-11	5.884 N(600 gf)	0.17	200	40
CB17-1K-11	9.807 N(1 kgf)	0.17	290	40
CB17-2K-11	19.61 N(2 kgf)	0.17	410	40
CB17-3K-11	29.42 N(3 kgf)	0.17	500	40

Specifications and outline dimensions and so on which have printed may subject to change for the purpose of Improvement without notice.

## SPECIFICATIONS

Load Cell for Scale

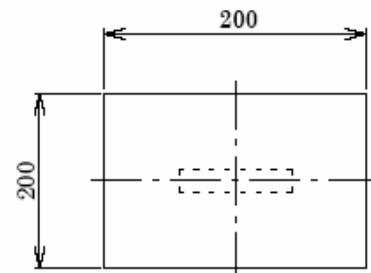
Load Cell  
CB17-600G~3K-11

SPEC.No.EN214021-B 1/2

### ● Performance

Rated capacity	: 5.884 N (600 gf) ~ 29.42 N (3 kgf)
Safe overload	: 300 %R.C.
Ultimate overload	: 400 %R.C.
Rated output	: 1 mV/V ± 0.1 mV/V
Non-linearity	: 0.02 %R.O.
Hysteresis	: 0.02 %R.O.
Repeatability	: 0.02 %R.O.
Creep	: 0.02 %R.O./20 min
Creep recovery	: 0.02 %R.O./20 min

Maximum size of loading plate



(Unit : mm)

### ● Electrical

Excitation, recommended	: 10 V or less
Excitation, at maximum	: 15 V
Zero balance	: ± 0.05 mV/V
Input resistance	: 420 Ω ± 30 Ω
Output resistance	: 350 Ω ± 5 Ω
Insulation resistance (between bridge and main body)	: 2 000 MΩ or more (DC50 V)

### ● Temperature

Temperature range, compensated	: -10 °C to 50 °C
Temperature range, safe	: -10 °C to 50 °C
Temperature effect on zero balance	: 0.04 %R.O./10 °C
Temperature effect on output	: 0.012 %LOAD/10 °C

### ● Cable

: φ 3.2, 4-cores shielded cable 40 cm directly attached,  
Cable end is separated.

### ● Class of protection

: Equivalent to IP40

### ● Material of element

: Aluminium alloy

### ● Durability

: 10<sup>6</sup> times with rated load applied.

### ● Effect of eccentric load

:

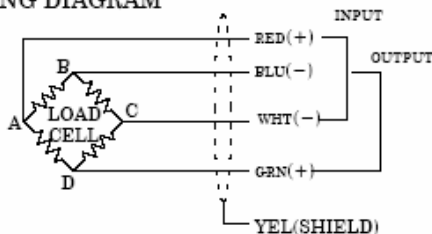
- Refer to the above figure as for the maximum size of loading plate.
- The center of loading plate and also the center of load cell should be the same position.
- Error is within 0.02 %R.O. applied with 1/2 of rated capacity at the position of 50 mm of eccentricity.

Note) R.O. means Rated Output and also R.C. means Rated Capacity.

Polarity of output will become plus(+) when the direction of compression load is applied.

If polarity change is required, change wiring of blue and green.

### WIRING DIAGRAM



### Composition

Main body	1
Inspection Data Sheet	1