

# BEI H38 Absolute Explosion Proof Encoder

This is the same Explosion Proof rated encoder as the H38 Incremental, in an absolute encoder version with output up to 13 bits of resolution. When your application needs the ability to recover position information quickly after a power loss and you are operating in a hazardous area – the H38 may be the answer to your needs.



## Electrical Specifications

Reference the H25 Absolute Encoder, page 34

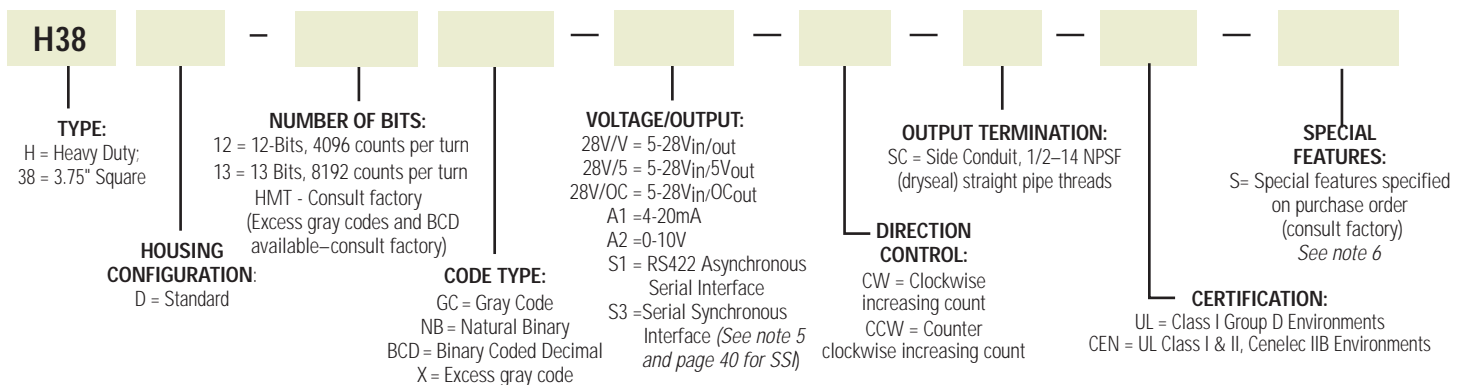
## Mechanical & Environmental Specs

Reference the H38 Incremental Encoder, pages 26-27

## H38 Absolute Encoder Ordering Options FOR ASSISTANCE CALL 800-350-2727

Use this diagram, working from left to right to construct your model number (example: H38D-12GC-28V/V-CW-SC-UL).

All notes and tables referred to can be found on pages 50-51.



# BEI H25 Absolute Optical Encoder

## Electrical Specifications

**Code:** 12 or 13 bits NB or GC; excess gray and BCD available

**Counts Per Shaft Turn:** 4096 or 8192

**Count Transition Accuracy:**  $\pm 1/2$  bit maximum

**Supply Voltage:** 5 – 28 VDC

**Current Requirements:** 120 mA typical

**Output Formats:** Parallel: Gray Code, Natural Binary and Binary Coded Decimal; Serial: Serial Synchronous Interface (SSI) compatible; Analog: 4-20 mA, 0-10V

**Voltage/Output:** (see note 5)

28V/V: Line Driver, 5–28 VDC in,  $V_{out} = V_{in}$

28V/5: Line Driver, 5–28 VDC in,  $V_{out} = 5$  VDC

28V/OC: Open Collector, 5–28 VDC in  $OC_{out}$

SSI: See page 40

**Protection Level:** Reverse, overvoltage and output short circuit protection (7272 only)

**Frequency Response:** 100kHz (1200 RPM for 12-bits, 600 RPM for 13-bits)

**Output Termination Pinouts:** See table page 41

## Mechanical & Environmental Specs

Reference the H25 Incremental Encoder, pages 16-17

## Connector

MS3112E14-19P, 19-pin connector on encoder body, mates to MS3116F14-19S (or equivalent)

**NOTES & TABLES:** All notes and tables referred to in the text can be found on pages 50.



Long considered the industry standard for shafted incremental encoders, the Model H25 is now available in an absolute version with up to 13 Bits of resolution. It incorporates many of the great standard features of the incremental version, including: EMI shielding, 40-lb ABEC 7 bearings, matched thermal coefficients on critical components, and custom optics. This encoder features a 12 or 13 Bit absolute parallel gray code output, a selection line for count direction, and an output latch as standard. Output is standard gray code with options for natural binary or SSI compatible signals. Signals can be provided in either a single-ended multi-voltage line driver (TTL compatible when provided with 5 volts) or as an open-collector style of output. Typical applications include dam gate control, cranes, telescopes, tool changers, and robotics.

## Certifications



EN 55011 and EN 61000-6-2

See Regulatory Information on pages 47–49 for further certification details.

Figure 1 Gray Code

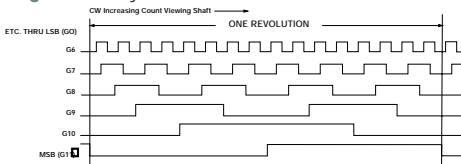
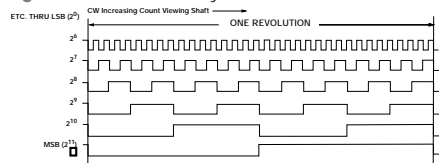
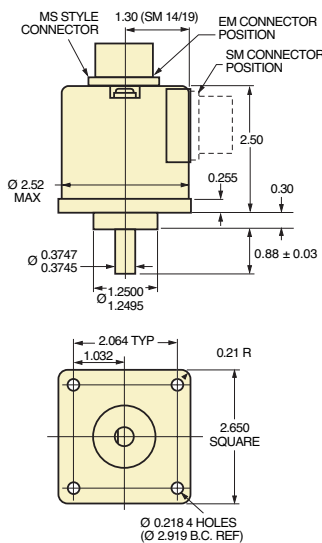


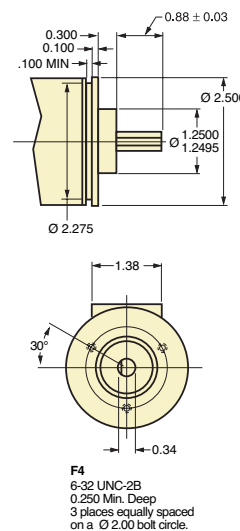
Figure 2 Natural Binary



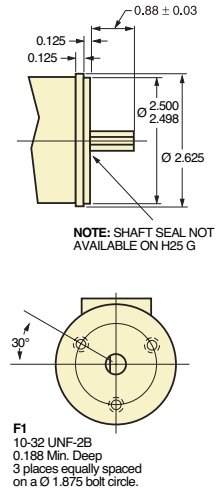
H25D - Square Flange



H25E - 2.50 Servo Mount



H25G - 2.62 Dia Servo Mount



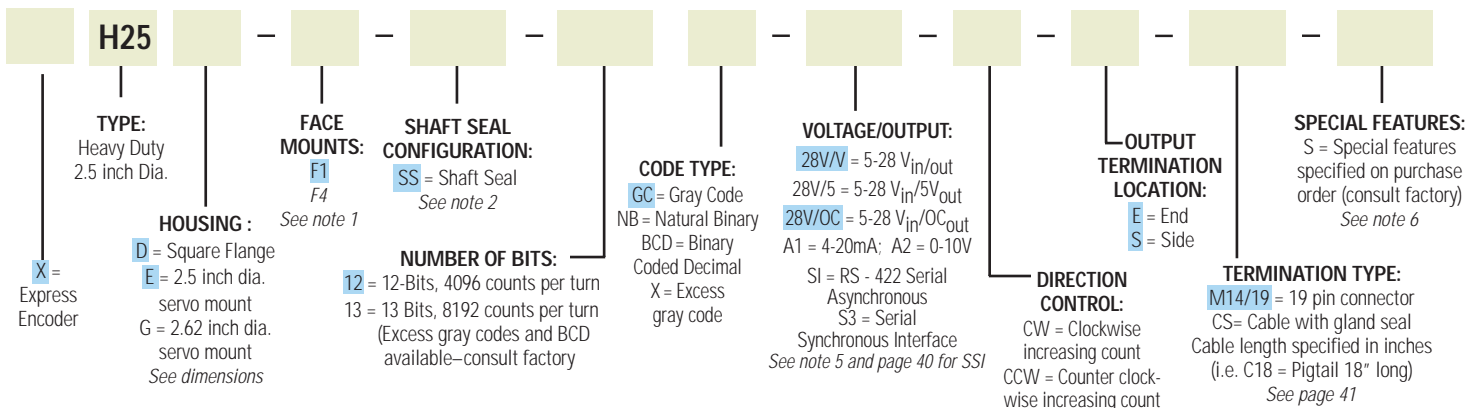
TOLERANCES: .XX =  $\pm 0.01$ , .XXX =  $\pm 0.005$

# H25 Absolute Encoder Ordering Options

FOR ASSISTANCE CALL 800-350-2727

Use this diagram, working from left to right to construct your model number (example: H25E-F4-SS-12GC-28V/V-CW-SM14/19).

All notes and tables referred to can be found on pages 50-51.



**EXPRESS ENCODERS®** Items highlighted with   are standard Express Encoders and ship in one to three days.

# BEI H38 Explosion Proof Optical Encoder



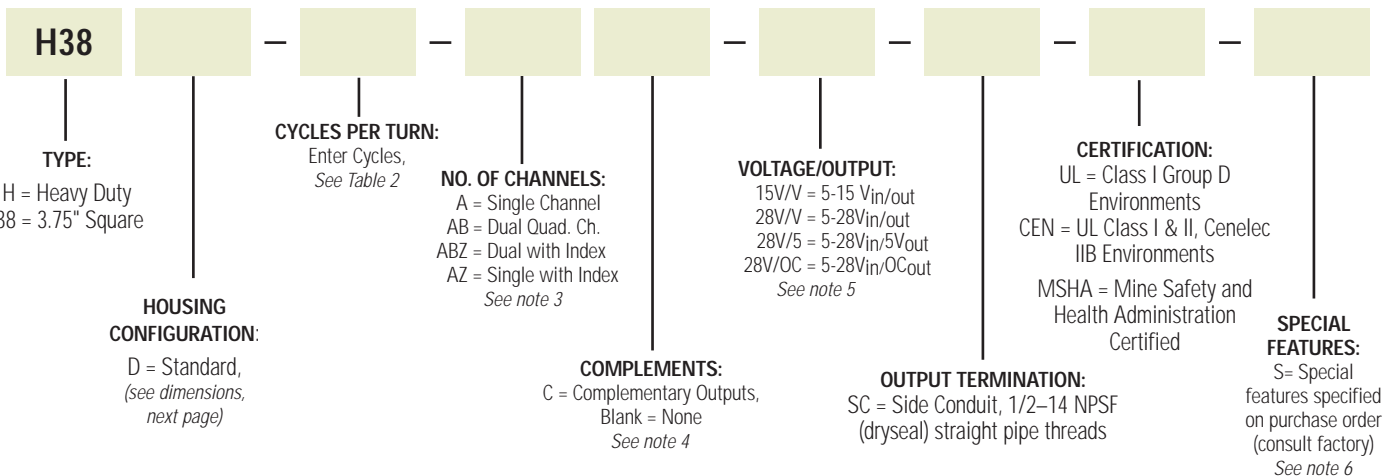
TERMINAL PIN NO.	INCREMENTAL OUTPUT	8 BIT GRAY CODE OUTPUT*
1	CASE GRND.	CASE GRND.
2	OV	OV
3	+V	+V
4	A	G0
5	B	G1
6	Z	G2
7	$\bar{A}$	G3
8	$\bar{B}$	G4
9	$\bar{Z}$	G5
10	SPARE	G6
11	SPARE	G7

\*For higher resolutions, see Absolute Encoder Options on pages 40-41.

The H38 is an explosion proof version of the field-proven H25 encoder series. The H38 is UL certified for NEMA Class 4X and 6 (outdoor non-hazardous locations) and Class 4X and 13 (indoor non-hazardous locations). It is available with Class 1, Group D, Division 1 or Class 2, Division 1 Group E, F, and G rating for use in hazardous locations. It features a standard shaft seal, double bearing seals, and a cast aluminum housing with hard anodized and dichromate sealed finish. The H38 is suitable for use in petroleum service industries, solvent refining operations, spray painting applications, and explosive dust environments.

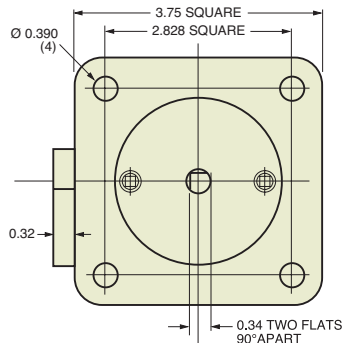
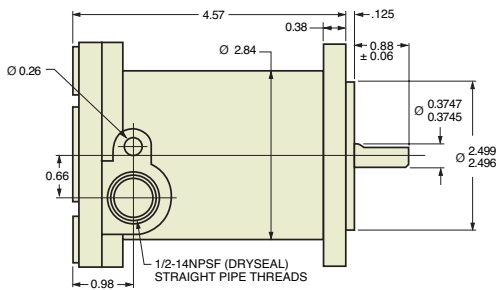
## H38 Explosion Proof Ordering Options FOR ASSISTANCE CALL 800-350-2727

Use this diagram, working from left to right to construct your model number (example:H38D-2000-ABZC-28V/V-SC-CEN). All notes and tables referred to can be found on pages 50-51.

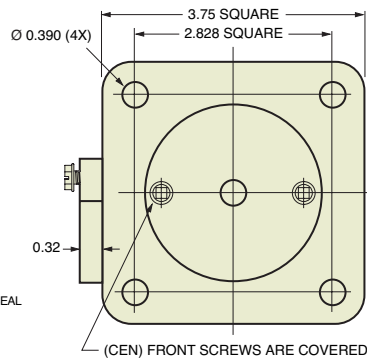
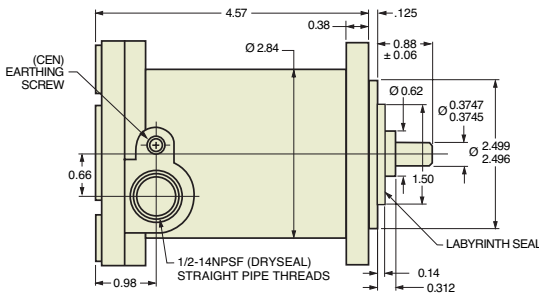


# Incremental Encoders

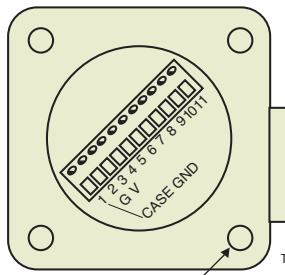
UL



CEN

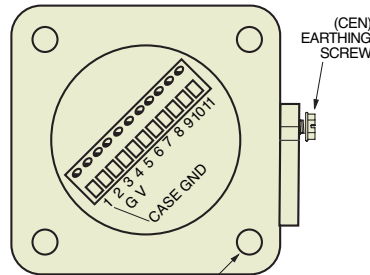


Rear View



UL

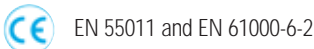
TOLERANCES:  
XX = ± 0.01,  
XXX = ± 0.005



CEN

## Certifications

The H38 Explosion Proof Encoder is available with the following certifications:



The Mine Safety and Health Administration (MSHA) is an organization that operates in the United States and enforces compliance with safety and health standards in the Nation's mines.

## Mechanical Specifications

**Shaft Diameter:** 3/8" nominal

**Flats On Shaft:** Two flats, 0.80" long X 0.30" deep at 90°

**Shaft Loading:** Up to 40 pounds axial and 20 pounds radial applied 1/4" from housing

**Shaft Runout:** 0.0005 T.I.R.

**Starting Torque at 25° C:** 4.0 in-oz (max)

**Bearings:** Class ABEC 7 standard

**Shaft Material:** 303 stainless steel

**Enclosure:** Die cast aluminum, hard anodized with dichromate sealed finish. Shaft seals and sealed bearings are standard to achieve environmental ratings.

**Bearing Life:** 2 X 10<sup>8</sup> revs (1300 hrs at 2500 RPM) at rated load; 1 X 10<sup>10</sup> revs (67,000 hrs at 2500 RPM) at 10% of rated load

**Maximum RPM:** 10,000 RPM (see Frequency Response, below)

**Moment of Inertia:** 4.1 X 10<sup>-4</sup> oz-in-sec<sup>2</sup>

**Weight:** 64 oz typical (approx 4 lbs)

## Electrical Specifications

**Code:** Incremental or Absolute (see Absolute version, pg 37)

**Output Format:** 2 channels in quadrature, 1/2 cycle index gated with negative B channel, or Absolute to 13 bits

**Cycles per Shaft Turn:** 1 to 72,000 (see table 2).

For resolutions above 3,600 see interpolation options on pages 32 and 32); Absolute to 8192 counts per turn

**Supply Voltage:** 5 to 28 VDC available

**Current Requirements:** 100 mA typical +output load, 250 mA (max)

**Voltage/Output:** (see note 5)

15V/V: Line Driver, 5–15 VDC in, V<sub>out</sub> = V<sub>in</sub>

28V/V: Line Driver, 5–28 VDC in, V<sub>out</sub> = V<sub>in</sub>

28V/5: Line Driver, 5–28 VDC in, V<sub>out</sub> = 5 VDC

28V/OC: Open Collector, 5–28 VDC in, OC<sub>out</sub>

**Protection Level:** Reverse, overvoltage and output short circuit (See note 5)

**Frequency Response:** 100 KHz, Up to 1MHz with interpolation option (see note 7)

**Output Terminations:** See Table 1, opposite page

**Termination Type:** Compression type, UL recognized. Accepts AWG 14 to 22, stranded wire, strip 1/4"

**Note:** Consult factory for other electrical options

## Environmental Specifications

**Enclosure Rating:** NEMA 4 X & 6 (IP66), outdoor Non-Hazardous locations, NEMA 4 X & 13 (IP66), indoor Non-Hazardous locations

**Temperature:** Operating, 0° to 70° C; extended temperature testing available (see note 8, pg 50); 80° C max for UL and CEN approved units; storage; -25° to 90° C unless extended temperature option called out.

**Shock:** 50 g's at 11 msec

**Vibration:** 5 to 2000 Hz @ 20 g's

**Humidity:** 100% RH

**Hazardous Area Rating:** Underwriters Laboratories listed for use in hazardous locations; NEMA Enclosure 7, Class 1, Group C & D, Division 1, NEC Class 2 circuits only, or Class 2, Groups E, F, and G

**NOTES & TABLES:** All notes and tables referred to in the text can be found on pages 50 and 51.



# BEI Absolute Encoder Options

## Parallel Absolute Output

The two most common types of absolute outputs are the Gray Code and the Natural Binary. Resolution for absolute encoders is expressed in bits where each successive bit increases the resolution by a factor of two. For example, 10 bits =  $2^{10}$  = 1024 counts per revolution.

Natural binary code (Figure 1) is constructed so that the code counts up using the natural sequence of binary counting, i.e. 000, 001, 010, 011, 100 . . etc. The drawback to using this code sequence is that at several count positions the code will have transitions on multiple bits simultaneously. Due to the normal variations caused by gate delays, line impedances, etc. the actual transitions will not occur simultaneously. Reading data during one of these times could result in an erroneous reading. This can be overcome by taking multiple readings.

Gray code (Figure 2), by contrast, is designed to avoid the multiple transition problem entirely. It is specifically constructed so that only one bit will transition at a time. This ensures that state changes are much less ambiguous to the controller and is generally considered to be a more robust type of absolute code.

Regardless of the code type, one of the characteristics of absolute encoders is that they can readily be used for any resolution up to and including their maximum resolution. For example, a 12 bit encoder can be used at only 8 bits by ignoring (or disconnecting) the four lowest significant bits (LSB). This enables an installation that uses multiple absolute encoders to use the same encoder throughout with each controller using only the bits that it needs.

Figure 1 Natural Binary

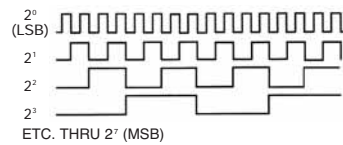
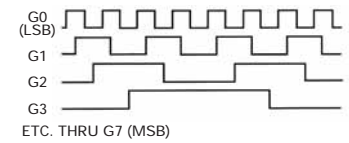


Figure 2 Gray Code



## Ordering 8-Bit Absolutes

For years, we produced encoders with a maximum resolution of 8 bits. Lots of those old 8 bit encoders are still around. We update them to newer 12 bit designs on a case-by-case basis. If you have an 8 bit encoder, here is how that model number was constructed: **Direction of Rotation, Count, Code** and **Latch** designators were inserted between **Shaft Seal Configuration** and **Voltage/Output** as shown below. To specify an equivalent encoder based on the 12 bit design, please call our Applications Specialists at **800-ENCODER** (800-362-6337) or check our web site at [www.beiied.com](http://www.beiied.com).

**Direction of Rotation:** CCW or CW

**Count:** 8

**Code:** GC= Gray Code or NB= Natural Binary

**Latch:** L= Latch or Blank=None

**Output Terminations:** EM20=MS3102R20-29P or ED25=DB25P; SM18 = MS3102R18-1P; C18 = Cable, with length specified in inches. Specify ED25 for Line Driver Outputs.

**Example: H25E-F1-SS-CCW-8GC-28V/V-EM20**

(one possible encoder configuration with the 8-Bit Absolute Option.)

## Serial Synchronous Interface (SSI)

SSI output provides effective synchronization in a closed-loop control system.

A clock pulse train from a controller is used to clock out sensor data: one bit of position data is transmitted to the controller per one clock pulse received by the sensor. The use of a differential driver permits reliable transmission of data over long distances in environments that may be electrically noisy. The encoder utilizes a clock signal, provided by the user interface, to time the data transmission. Receiving electronics must include an appropriate receiver as well as line terminating resistors.

### Features

- Synchronous transmission
- Transmission lengths to 1000 feet
- Accepts clock rates from 100 KHz to 1.8 MHz

### Data Transmission Sequence

1. Output driver of the encoder is a MAX 491 transceiver in transmit mode. The recommended receiver is a MAX 491 transceiver in receive mode.
2. Controller provides a series of pulses (or differential pulse pairs) on the CLOCK input lines.
3. On the first HIGH-to-LOW CLOCK transition, the encoder latches its data at the current position and prepares to transmit.
4. Controller reads data on the falling edge of the next 16 clock cycles.
5. The first bit is a START bit and is always HIGH.
6. Next come 12 data bits beginning with the most significant bit (MSB) and ending with the least significant bit (LSB). This is followed by three LOW pulses.
7. After the DATA bits, the DATA line goes LOW and remains LOW for a minimum of 30 microseconds between the end of the DATA bits and the beginning of the next CLOCK series.

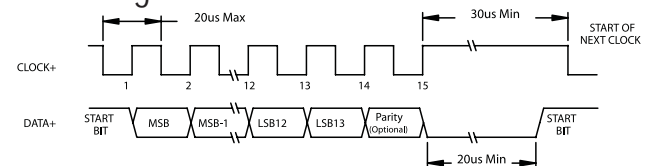
### Interfacing Long Data Lines

Cable impedance can create a transmission delay, in effect, shifting the phase relationship between the clock pulse and the data. If this phase shift exceeds 180° then the wrong bit position will be sampled by the receiver. As a result, the maximum allowable clock frequency is a function of the cable length. For 24 AWG, stranded, 3 pair cable (BEI part number 37048-003 or equivalent) the group delay is 1.36ns/ft. The table below shows the maximum transmission rate allowable as a function of cable length to ensure a phase shift of less than 90°

CLOCK, Maximum (kHz) = 92,000 / Cable Length (ft)CW

Cable Length (ft)	50	100	200	300	500	1000
Max Freq (kHz)	1800	900	500	300	200	100

### SSI Timing



## Ordering SSI

HOW TO SPECIFY SSI OUTPUT IN THE ENCODER MODEL NUMBER:

Use the designation, S3 between the **Code Format** designation and the **Connector** designation.

**Example: H25D-SS-12GC-S3-CW-SM18**

# Absolute Encoders



## Single Turn Absolute Encoder Options

The tables below are reference for pinouts, connections and operation of BEI's single turn absolute encoders. These absolute options are available in a wide range of package styles with a variety of outputs. The applicability table below shows which combinations are currently available. As always, you can call us at **800-350-ASAP** (2727) for immediate applications assistance should you have any questions.

Output Code and Terminations (12 & 13 Bit)								
PARALLEL CODE					TERMINATION TYPE			
	Gray Code		Natural Binary		Binary Coded Decimal	Cable	Conn	Term Board H38 & H40
	12 Bit	13 Bit	12 Bit	13 Bit				
MSB	G <sub>11</sub>	G <sub>12</sub>	2 <sup>11</sup>	2 <sup>12</sup>	A <sub>0</sub>	WHT/BLK	A	1
	G <sub>10</sub>	G <sub>11</sub>	2 <sup>10</sup>	2 <sup>11</sup>	B <sub>0</sub>	WHT/BRN	B	2
	G <sub>9</sub>	G <sub>10</sub>	2 <sup>9</sup>	2 <sup>10</sup>	C <sub>0</sub>	WHT/RED	C	3
	G <sub>8</sub>	G <sub>9</sub>	2 <sup>8</sup>	2 <sup>9</sup>	D <sub>0</sub>	WHT/ORN	D	4
	G <sub>7</sub>	G <sub>8</sub>	2 <sup>7</sup>	2 <sup>8</sup>	A <sub>1</sub>	WHT/YEL	E	5
	G <sub>6</sub>	G <sub>7</sub>	2 <sup>6</sup>	2 <sup>7</sup>	B <sub>1</sub>	WHT/GRN	F	6
	G <sub>5</sub>	G <sub>6</sub>	2 <sup>5</sup>	2 <sup>6</sup>	C <sub>1</sub>	WHT/BLU	G	7
	G <sub>4</sub>	G <sub>5</sub>	2 <sup>4</sup>	2 <sup>5</sup>	D <sub>1</sub>	WHT/IO	H	8
	G <sub>3</sub>	G <sub>4</sub>	2 <sup>3</sup>	2 <sup>4</sup>	A <sub>2</sub>	WHT/GRY	J	9
	G <sub>2</sub>	G <sub>3</sub>	2 <sup>2</sup>	2 <sup>3</sup>	B <sub>2</sub>	WHT	K	10
LSB <sub>12</sub>	G <sub>1</sub>	G <sub>2</sub>	2 <sup>1</sup>	2 <sup>2</sup>	C <sub>2</sub>	GRY/BLK	L	11
	G <sub>0</sub>	G <sub>1</sub>	2 <sup>0</sup>	2 <sup>1</sup>	D <sub>2</sub>	GRY/BRN	M	12
LSB <sub>13</sub>		G <sub>0</sub>	2 <sup>0</sup>	A <sub>3</sub>	GRY/RED	N	13	
	0V (CIRCUIT COMMON) <sup>1</sup>			B <sub>3</sub>	GRY/ORN	P		
	DIRECTION CONTROL				ORN	R	18	
	CASE GROUND				GRN	S	16	
	0 V (CIRCUIT COMMON)				BLK	T	15	
	LATCH CONTROL				YEL	U	17	
	+V (SUPPLY VOLTAGE)				RED	V	14	
	SHIELD DRAIN				BARE	—		

<sup>1</sup>Pin P is available for a tri-state option

Output Applicability Table								
	12 BITS PARALLEL	13 BITS PARALLEL	14/15 BITS	12x12 BITS	S3 SSI	S1 RS422	A1 4-20mA	A2 0-10 V
H25	•	•			•	•	•	•
H25X			•		•			
HS35	•				•			
H38	•	•		•	•	•	•	•
H40	•	•		•	•	•	•	•
HMT25				•	•		•	•

**Direction Control:** Standard is CW increasing when viewed from the shaft end. Pin R is normally HI (or N/C) and is pulled up internally to +V. To reverse the count direction, Pin R must be pulled LO (COMMON).

**Latch control:** Encoder outputs are active and provide continuous parallel position information when Pin U is HI (or N/C). Pin U is pulled up internally to +V. When Pin U is LO (COMMON) the encoder outputs are latched at the logic state that is present when the latch is applied and will stay latched until Pin U is no longer grounded.

Parallel Code (14 & 15 Bit) <sup>2</sup>					
	Gray Code		Natural Binary		M14/19 Connector
	14 BIT	15 Bit	14 BIT	15 Bit	
MSB	G <sub>13</sub>	G <sub>14</sub>	2 <sup>13</sup>	2 <sup>14</sup>	A
	G <sub>12</sub>	G <sub>13</sub>	2 <sup>12</sup>	2 <sup>13</sup>	B
	G <sub>11</sub>	G <sub>12</sub>	2 <sup>11</sup>	2 <sup>12</sup>	C
	G <sub>10</sub>	G <sub>11</sub>	2 <sup>10</sup>	2 <sup>11</sup>	D
	G <sub>9</sub>	G <sub>10</sub>	2 <sup>9</sup>	2 <sup>10</sup>	E
	G <sub>8</sub>	G <sub>9</sub>	2 <sup>8</sup>	2 <sup>9</sup>	F
	G <sub>7</sub>	G <sub>8</sub>	2 <sup>7</sup>	2 <sup>8</sup>	G
	G <sub>6</sub>	G <sub>7</sub>	2 <sup>6</sup>	2 <sup>7</sup>	H
	G <sub>5</sub>	G <sub>6</sub>	2 <sup>5</sup>	2 <sup>6</sup>	J
	G <sub>4</sub>	G <sub>5</sub>	2 <sup>4</sup>	2 <sup>5</sup>	K
	G <sub>3</sub>	G <sub>4</sub>	2 <sup>3</sup>	2 <sup>4</sup>	L
	G <sub>2</sub>	G <sub>3</sub>	2 <sup>2</sup>	2 <sup>3</sup>	M
	G <sub>1</sub>	G <sub>2</sub>	2 <sup>1</sup>	2 <sup>2</sup>	N
LSB <sub>14</sub>	G <sub>0</sub>	G <sub>1</sub>	2 <sup>0</sup>	2 <sup>1</sup>	P
LSB <sub>15</sub>	DIR CONTROL	G <sub>0</sub>	DIR CONTROL	2 <sup>0</sup>	R
	CASE GROUND				S
	OV (CIRCUIT COMMON)				T
	LATCH	DIR/LATCH	LATCH	DIR/LATCH	U
	+V (SUPPLY VOLTAGE)	+V (SUPPLY VOLTAGE)	+V (SUPPLY VOLTAGE)	+V (SUPPLY VOLTAGE)	V

<sup>2</sup>Units Manufactured before April 2007 are LSB ustified.

SSI Output Termination Table					
	M18 CONN	M14/19 CONN	CABLE CONN	TERM. BOARD	
				H38	H40
DATA +	A	A	YEL	4	1
DATA-	H	B	WHT/YEL	7	7
CLOCK+	B	C	BLU	5	2
CLOCK-	I	D	WHT/BLU	8	8
DIR CONTROL	C	R	ORN	6	3
CASE GROUND	G	S	GRN	1	6
CIRCUIT COMMON	F	T	BLK	2	5
+V SUPPLY VOLTAGE	D	V	RED	3	4
SHIELD DRAIN	—	—	BARE	—	—

**Dir/Latch on 15-Bit Encoders:** Due to a limited number of connector pins, either direction control or latch is available on pin U.

**M18 Connector** is a MS3102R18-1P, 10-pin connector on the encoder body and mates to an MS3106F18-1S connector or can be used with a standard cable/connector assembly, BEI P/N 924-31186-18XX (Where X = 10, 20 or 30 for a 10, 20, or 30 foot length). This is the preferred connector for SSI output.

**M14/19 Connector** is a MS3112E14-19P, 19-pin connector on the encoder body and mates to an MS3116F14-19S or equivalent.